

# CERTIFICATE OF LOCATION OF GOVERNMENT CORNER

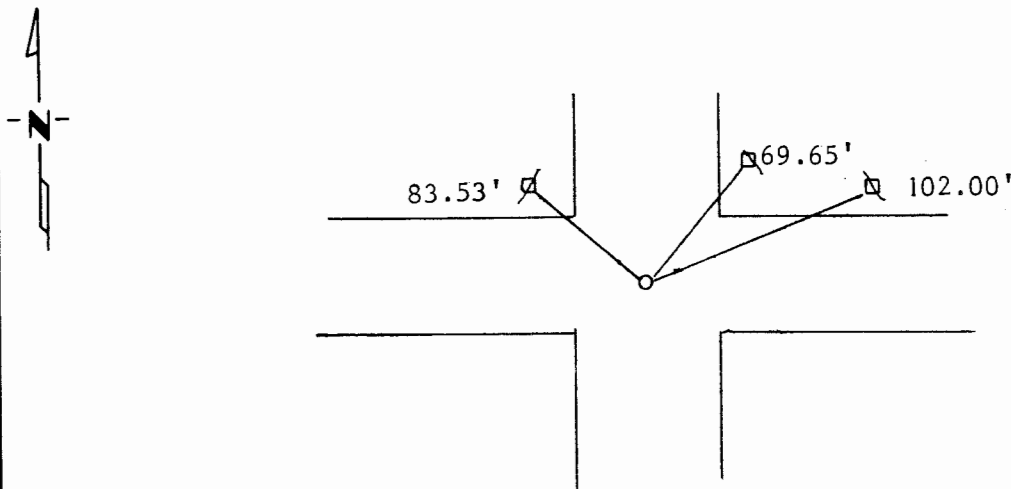
Northeast \_\_\_\_\_ Corner of Section 32, Township 106N, Range 41W, 5th P.M.

STATE OF MINNESOTA, County of Murray

At the corner location shown on the sketch:

- On \_\_\_\_\_ found a \_\_\_\_\_  
DATE
- left monument as found,  lowered monument,  removed monument (explain)
- On 05-16-89 placed a 1" iron pipe with seal. Dug with jackhammer 3' down and used DATE prober found nothing. Set pipe by existing evidence.

### SKETCH OF REFERENCE TIES



Nail and Seal in Power Pole NW 83.53'

Nail and Seal in Power Pole NE 69.65'

Nail and Seal in Power Pole NE 102.00'

Statement of evidence relative to this corner location is on back of page.

I hereby certify that this document and the data contained herein was prepared by me or under my direct supervision.

Ray E. Mowry 5/19/89  
SIGNATURE DATE

Registration No. 11943

- Land Surveyor,  Professional Engineer
- County Surveyor,  County Engineer

### OFFICE OF THE COUNTY RECORDER

County of \_\_\_\_\_

I hereby certify that this document was filed in the Co. Recorders office at \_\_\_\_\_ .M. on the \_\_\_\_\_ day of \_\_\_\_\_ A.D., 19 \_\_\_\_\_

County Recorder \_\_\_\_\_

By \_\_\_\_\_, Deputy

DOCUMENT NO. \_\_\_\_\_

Statement of Evidence:

The corner was recorded as a concrete monument in the Highway departments records.

We dug down  $3\frac{1}{2}$  feet and used a prober and found nothing. I set a one inch iron pipe with a seal by splitting the righth of ways.

# CERTIFICATE OF LOCATION OF GOVERNMENT CORNER

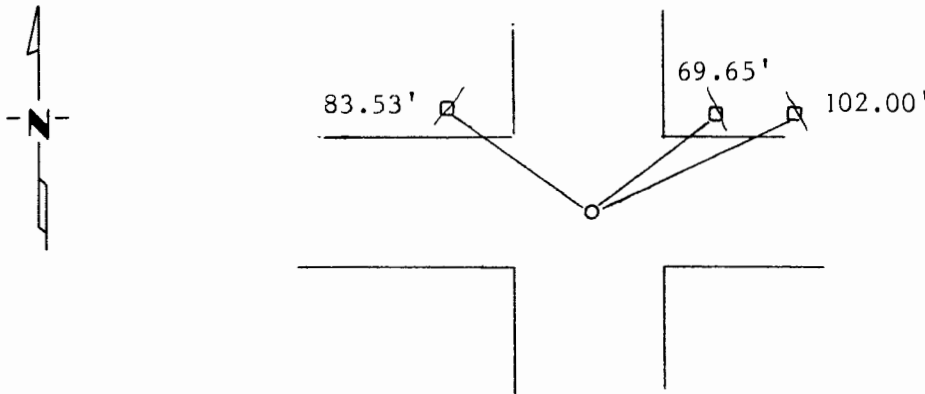
Northeast Corner of Section 32, Township 106N, Range 41W, 5th P.M.

STATE OF MINNESOTA, County of Murray

At the corner location shown on the sketch:

- On \_\_\_\_\_ found a \_\_\_\_\_  
DATE
- left monument as found,  lowered monument,  removed monument (explain)
- On 05-16-89 placed a 1 1/2" iron pipe with seal  
DATE

### SKETCH OF REFERENCE TIES



Nail and seal in power pole NW 83.53'

Nail and seal in power pole NE 69.65'

Nail and seal in power pole Ne 102.00'

Statement of evidence relative to this corner location is on back of page.

I hereby certify that this document and the data contained herein was prepared by me or under my direct supervision.

Regie E. Moser Jan 10, 1991  
SIGNATURE DATE

Registration No. 11943

- Land Surveyor,  Professional Engineer
- County Surveyor,  County Engineer

### OFFICE OF THE COUNTY RECORDER

County of \_\_\_\_\_

I hereby certify that this document was filed in the Co. Recorders office at \_\_\_\_\_ .M. on the \_\_\_\_\_ day of \_\_\_\_\_ A.D., 19 \_\_\_\_\_

County Recorder \_\_\_\_\_

By \_\_\_\_\_, Deputy

DOCUMENT NO. \_\_\_\_\_

Statement of Evidence:

Original survey done in the 1860's by pit and mound.

On May 16, 1989 we dug with a jackhammer we found a spike and pieces of wood , we dug down 3' and used our prober and found nothing more, set a 1½" iron pipe with seal by splitting existing evidence.